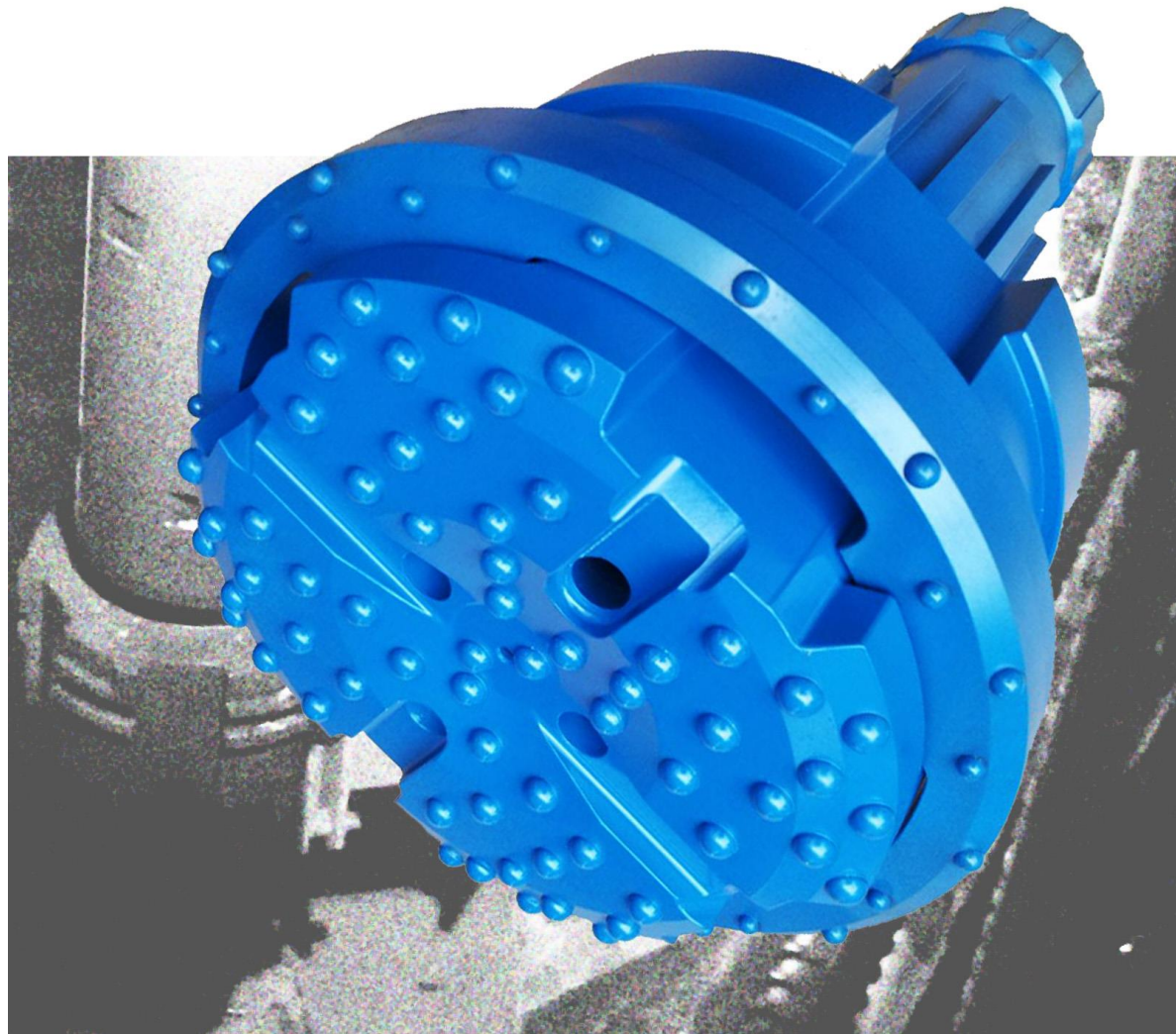


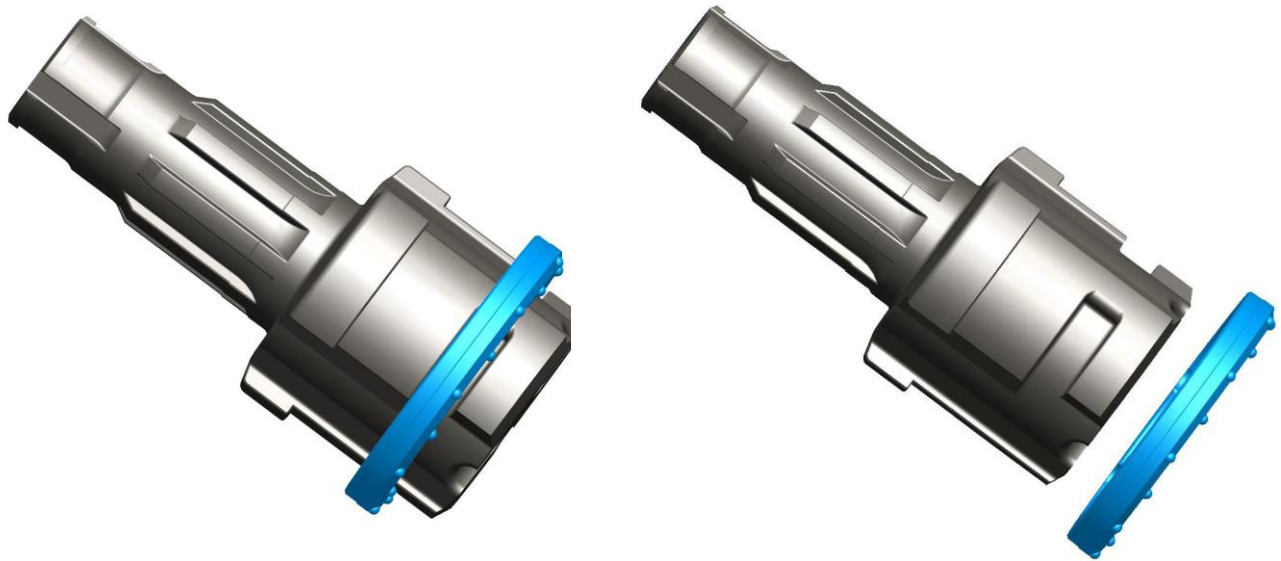
PITELUMEC

THE PRING-E 278 RING BIT CASING SYSTEM



CASING SIZE 323MM OD X 298MM ID DRILLING DIA. 340MM

PNEUMEC PRING-E 278 CASING SYSTEM



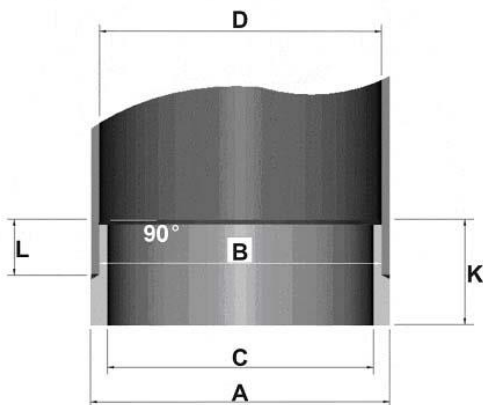
PRING-E 278 PARTS LIST

1.	DRIVER BIT SD10 SHANK	UGD278S10RE
2.	RING	URB278RE
3.	COMPLETE SYSTEM	UCS278S10RE

PRING-E 278 SPECIFICATIONS

UPPER BODY DIAMETER	296MM	RING ID	240MM
RING OD	340MM	CASING SIZE	323MM OD X 298MM ID
SYSTEM LENGTH	618MM	SYSTEM WEIGHT	160KG

PRING-E 278 CASING SHOES



DIA. A	323MM
DIA. B	296MM
DIA. C	275MM
DIA. D	298MM
L	40MM
K	80MM



PNEUMEC COMPANY LIMITED

1st Floor, Tin On Sing Comm. Bldg., 41-43 Graham St. Central, H.K.

Tel : (852) 2180 9922

Fax : (852) 2180 9982

Website : www.pneumec.com

email : info@pneumec.com